



Meadside Close, BR3 | Guide Price £300,000

020 8702 9333

[crystalpalace@pedderproperty.com](mailto:crystalpalace@pedderproperty.com)

**pedder**  
We live local



# In General

- Two bedroom ground floor apartment
- No onward chain
- A share of the freehold
- Two parking spaces
- Quiet cul de sac
- Nearby rail links
- Juliet balcony
- 19ft 6 reception room

# In Detail

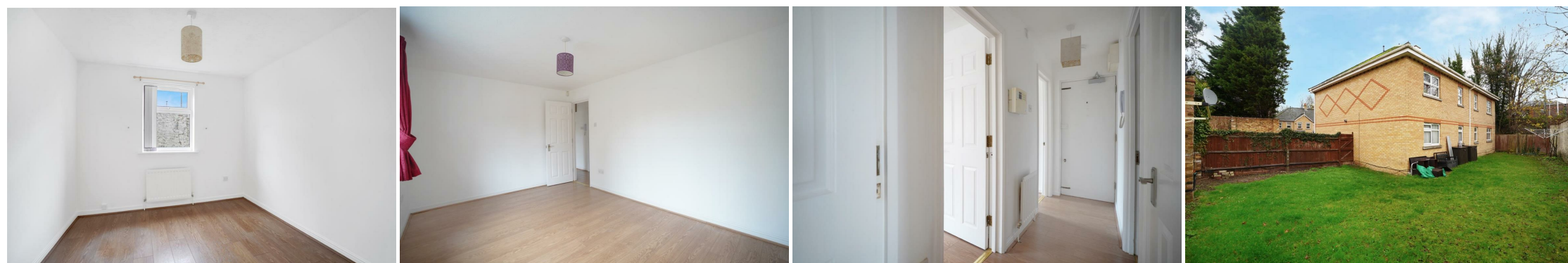
**\*\* Guide price £300,000 - £325,000 \*\***

A neatly presented two bedroom ground floor apartment forming a small low rise development nearby multiple transport links and amenities.

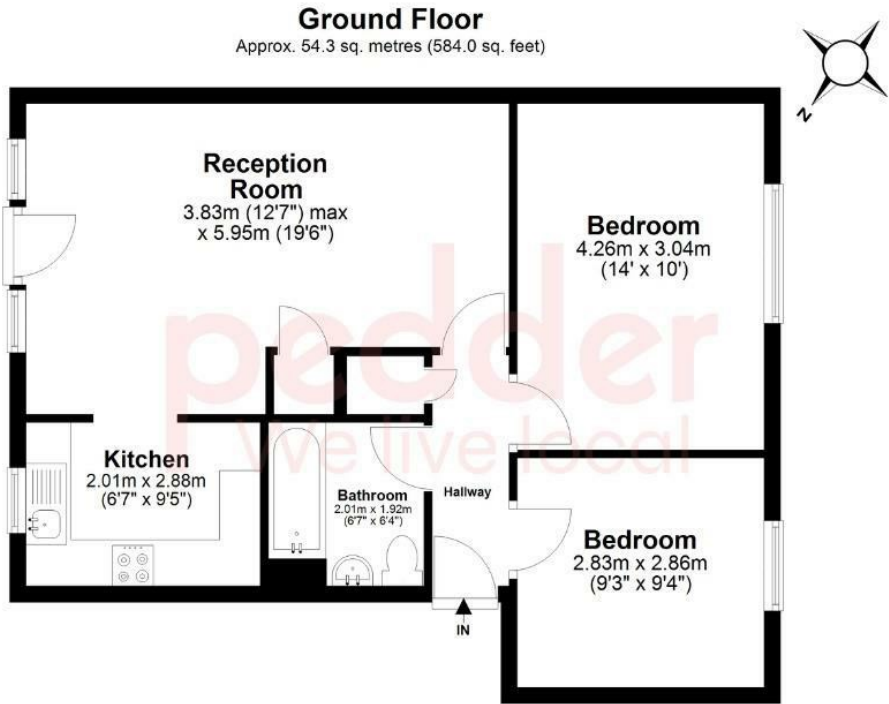
This neutrally decorated blank canvas could be an ideal opportunity for a hassle-free first purchase and comes with the benefit of a share of the freehold and no onward chain. A generous reception room extends to 19ft 6 and boasts a Juliet balcony which is great for airflow on summer days. Both of the bedrooms are of a double proportion (ideal for long term guests or sharers), whilst the kitchen has ample work and storage space and is partially open to the living area. Further benefits include fitted storage, two allocated parking spaces, and a communal rear garden.

Meadside Close is a quiet cul de sac well placed for both Clock House and Kent House rail links (to London Bridge, Victoria, and Cannon Street), Beckenham Road tram stop (to East Croydon and Wimbledon), as well as a variety of shopping and leisure options within the vicinity.

EPC: C | Council Tax Band: C | Lease: 969 Years remaining | SC: £0 | GR: £0 | BI: Inc in maintenance fund £60pm



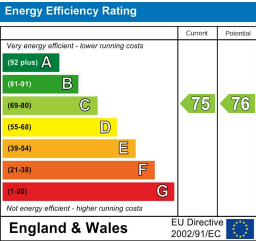
# Floorplan



Total area: approx. 54.3 sq. metres (584.0 sq. feet)

Copyright www.pedderproperty.com 2024. These plans are for representation purposes only as Defined by RICS - Code of Measuring Practice. Not drawn to scale. windows and door measurements are approximate. please check dimensions, shapes and compass bearings before making any decisions reliant upon them.

Plan produced using PlanUp.



Pedder Property Ltd trading as Pedder for themselves and for the vendor/landlord of this property whose agents they are, give notice that (1) these particulars do not constitute any part of an offer or contract, (2) all statements contained within these particulars are made without responsibility on the part of Pedder or the vendor/landlord, (3) whilst made in good faith, none of the statements contained within these particulars are to be relied upon as a statement of representation or fact, (4) any intending purchaser/tenant must satisfy him/herself by inspection or otherwise as to the correctness of each of the statements contained within these particulars, (5) the vendor/landlord does not make or give either Pedder or any person in their employment any authority to make or give representation or warranty whatsoever in relation to this property.